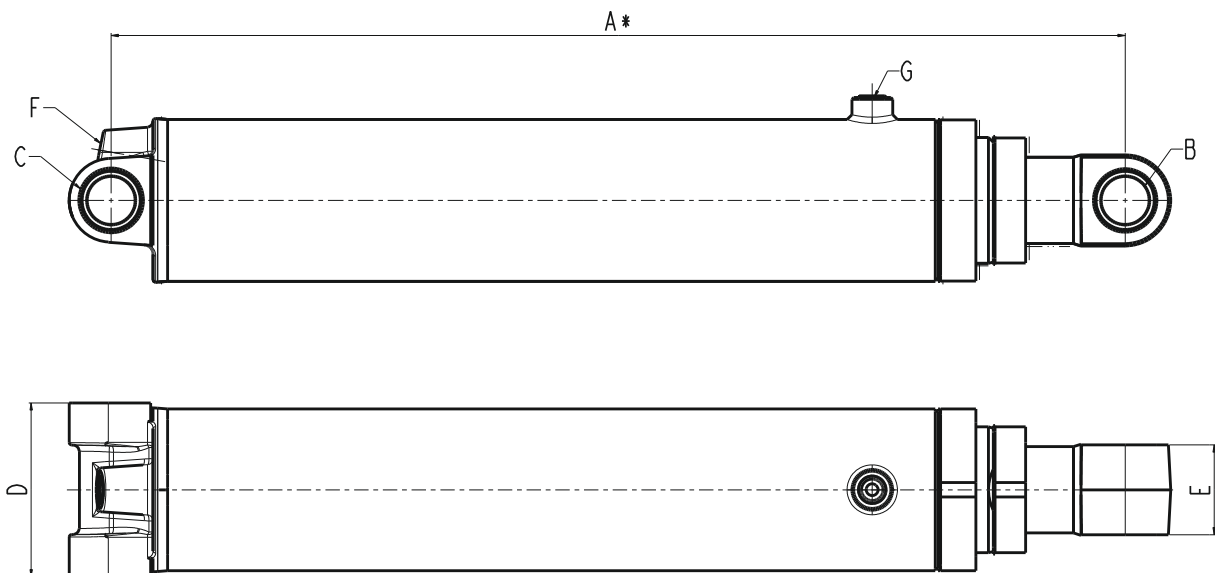




- High strength precision tubes, outer rams ground, polished and super finished
- Specially developed high strength, high nodule count ductile iron pistons and end covers
- Enhanced corrosion resistance through chrome plating
- High life nitrile rubber seals
- Self-lubricating non-metallic bushes at rod eyes and end covers
- High strength and fatigue resistant end mountings

Under Body Tipping

| Wipro Part Number | TC0019 | | TC0200 | | TC0201 | | TC0273 | | TC0236 | | TC0062 | |
|-----------------------------------|-----------------|---------|-----------------|---------|-----------------|---------|-----------------|---------|-----------------|---------|-----------------|---------|
| Model | 55-2-58 | | 55-2-38 | | 60-2-60 | | 72-2-50 | | 72-2-62 | | 72-2-88 | |
| A (cylinder closed length, mm) * | 867 | | 867 | | 893 | | 866 | | 936 | | 1219 | |
| B (rod end ID, mm) | 40 | | 40 | | 35 | | 40 | | 40 | | 40 | |
| C (bore end ID, mm) | 40 | | 40 | | 38 | | 40 | | 40 | | 40 | |
| D (bore end width) | 145 | | 145 | | 130 | | 145 | | 145 | | 145 | |
| E (rod end width) | 75 | | 75 | | 77 | | 75 | | 75 | | 75 | |
| F (bore end-port size) | M27X2 | | M27X2 | | M22X1.5 | | M22X1.5 | | M22X1.5 | | M22X1.5 | |
| G (rod end-port size) | M22X1.5 | | M22X1.5 | | M22X1.5 | | M22X1.5 | | M22X1.5 | | M22X1.5 | |
| Number of stages | 2 | | 2 | | 2 | | 2 | | 2 | | 2 | |
| Cylinder fully opened length (mm) | 2001 | | 1598 | | 2073 | | 1887 | | 2157 | | 2946 | |
| Stage wise stroke (mm) | 557 | 597 | 557 | 194 | 585 | 615 | 503 | 538 | 603 | 638 | 856 | 891 |
| Total stroke (mm) | 1154 | | 751 | | 1200 | | 1041 | | 1241 | | 1747 | |
| | Stage 1 | Stage 2 | Stage 1 | Stage 2 | Stage 1 | Stage 2 | Stage 1 | Stage 2 | Stage 1 | Stage 2 | Stage 1 | Stage 2 |
| Bore sizes (mm) | 95 | 70 | 95 | 70 | 110 | 80 | 120 | 90 | 120 | 90 | 120 | 90 |
| Rod sizes (mm) | 83 | 55 | 83 | 55 | 93 | 60 | 105 | 72 | 105 | 72 | 105 | 72 |
| Oil volume (ltrs) | 3.95 | 2.3 | 3.95 | 1 | 3.97 | 1.73 | 5.68 | 3.42 | 6.82 | 4.06 | 9.68 | 5.67 |
| Total oil volume (ltrs) | 6.25 | | 4.95 | | 5.7 | | 9.1 | | 10.88 | | 15.35 | |
| Max Thrust @ 90° (Kgf) | 14887 | 8083 | 14887 | 8083 | 17108 | 9049 | 18095 | 10178 | 18095 | 10178 | 20360 | 11452 |
| Working pressure (bar) | 210 | | 210 | | 180 | | 160 | | 160 | | 180 | |
| Mounting | Clevis + Rodeye | | Clevis + Rodeye | | Clevis + Rodeye | | Clevis + Rodeye | | Clevis + Rodeye | | Clevis + Rodeye | |
| Weight of cylinder (kgs) | 44 | | 46 | | 55 | | 53 | | 57 | | 76 | |



*Cylinders to be installed by pulling out 20mm

- All dimensions are in mm
- Subject to change without notice

● Wipro Infrastructure Engineering

(T) +91 (80) 3929 2111
(F) +91 (80) 3929 4080
(E) winsales.india@wipro.com
(W) wiproinfra.com