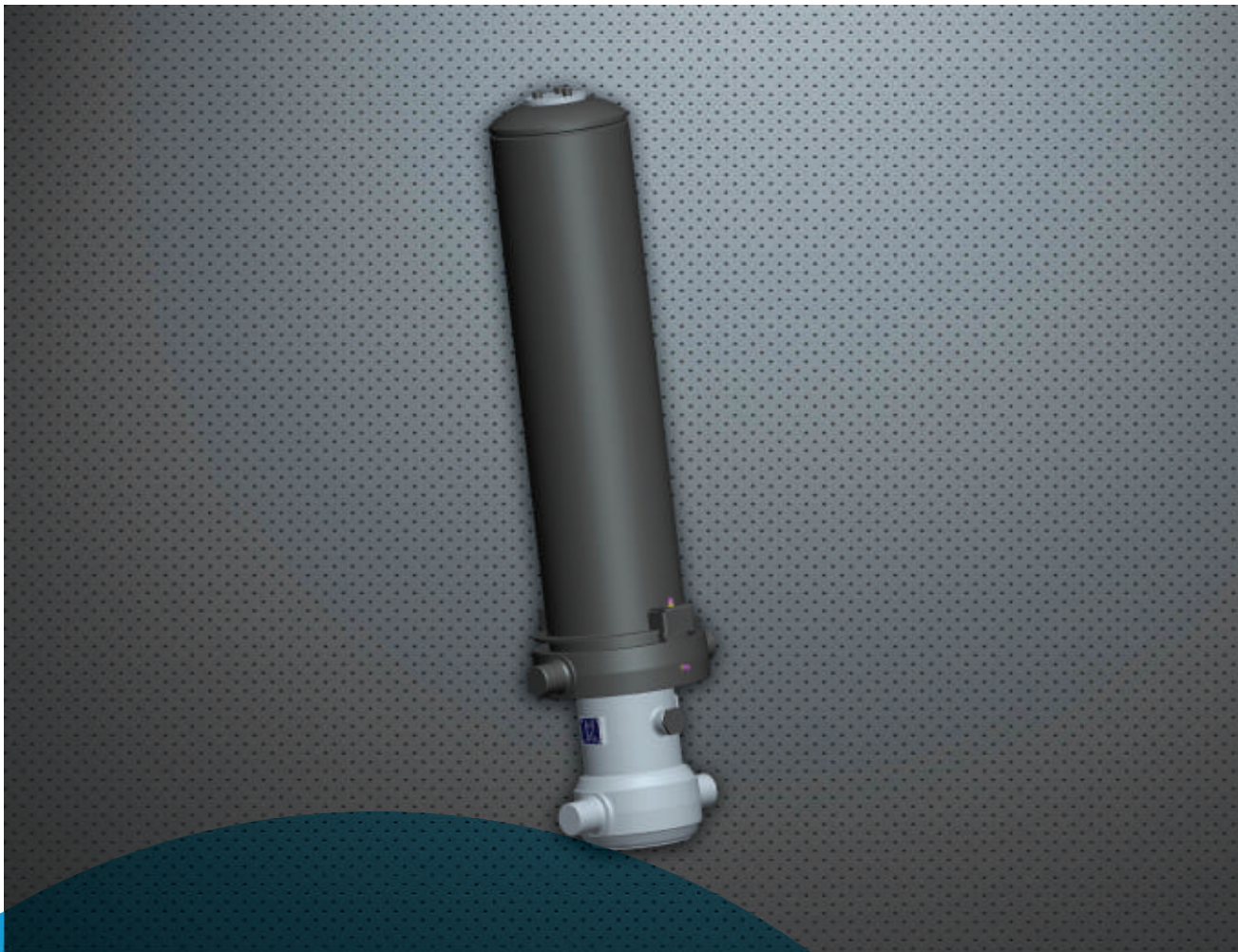


Diamond Front End Telescopic Cylinder-Cover Type

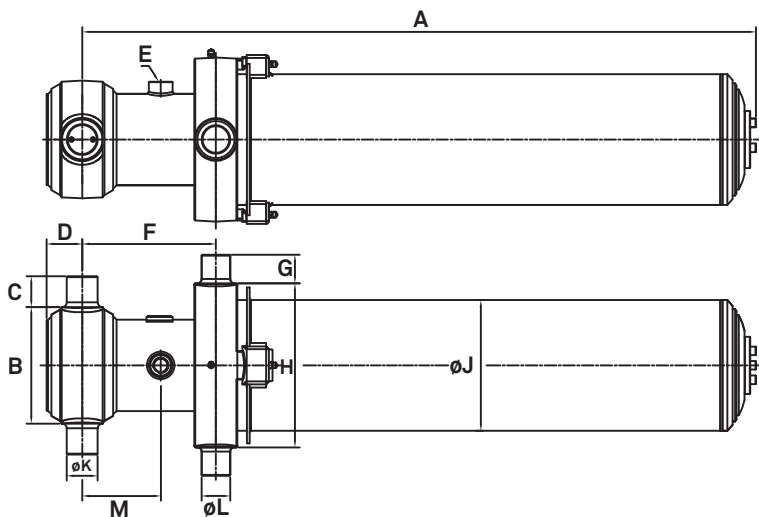


Features

- Piston bearings designed to withstand high compressive and side load
- Bigger size trunnion pins to withstand high bending and shear load
- Special wipers to prevent dust entry into the rams
- Secondary sealing systems for leak free rams
- High strength spring steel stoppers to withstand compressive and side load
- Wider piston bearings and rod guides to support rams under dynamic load
- External stopper rings to take relief pressure load at stroke end
- Positive locking for rod eye threads to arrest loosening
- Combination of fixed and floating trunnion for cylinders helps take side load and any misalignment between the mounting
- Double trunnion helps to increase the stability of the cylinder
- Payload of the tipper body increases as the DFC cylinders are used with straight front board design
- Shock absorbing rubber pad in the cylinder trunnion

Diamond Front End Telescopic Cylinder – Cover Type

MODEL	DIMENSIONS												SPECIFICATIONS					
	A	B	C	D	E	F	G	H	J	K	L	M	Stroke (mm)	Stages	Working Volume(Lts)	Pressure (Bar)	Weight (kgs)	Tipping Weight(ton)
DFC 110-3-2635	1135	163	65	60	1" BSP/SAE	343*	65	201	Ø165	Ø65	Ø60	190	2635	3	17.6	190	121.5	22
DFC 110-3-3205	1325	163	65	60	1" BSP/SAE	343*	65	201	Ø165	Ø65	Ø60	190	3205	3	21.2	190	134.3	22
DFC 129-3-3710	1507	201	67	60	1" BSP/SAE	343*	60	319	Ø230	Ø65	Ø60	221	3713	3	37.2	190	206	35
DFC 129-3-4000	1613	201	67	51	1" BSP/SAE	343*	60	319	Ø230	Ø65	Ø60	171	4000	3	38.8	190	217.4	35
DFC 129-3-4270	1703	201	67	51	1" BSP/SAE	343*	60	319	Ø230	Ø65	Ø60	154	4270	3	41.3	190	226.4	35
DFC 129-4-4620	1474	201	67	51	1" BSP/SAE	343*	60	319	Ø230	Ø65	Ø60	154	4620	4	43	190	212	35
DFC 129-4-5180	1574	201	67	60	1" BSP/SAE	343*	60	319	Ø230	Ø65	Ø60	165	5180	4	42.9	190	229.7	35
DFC 149-3-3880	1573	201	67	51	1" BSP/SAE	343*	60	345	Ø275	Ø65	Ø60	140	3880	3	51.7	190	256.2	45
DFC 149-4-4185	1325	201	67	51	1" BSP/SAE	343*	60	345	Ø275	Ø65	Ø60	190	4185	4	48.6	190	258	45
DFC 149-3-4270	1702	201	67	51	1" BSP/SAE	343*	60	345	Ø275	Ø65	Ø60	154	4270	3	56.9	190	272.2	45
DFC 149-4-4630	1437	201	67	51	1" BSP/SAE	343*	60	345	Ø275	Ø65	Ø60	190	4630	4	53.7	190	260.8	45
DFC 149-4-5180	1574	201	67	51	1" BSP/SAE	343*	60	345	Ø275	Ø65	Ø60	190	5180	4	60.2	190	279.2	45
DFC 149-4-5460	1714	201	67	51	1" BSP/SAE	343*	60	345	Ø275	Ø65	Ø60	190	5460	4	69	190	280	45
DFC 169-4-4280	1331	245	65	75	1" BSP/SAE	343*	60	345	Ø275	Ø65	Ø60	165	4280	4	66.7	190	282.7	50
DFC 169-4-4620	1416	245	65	75	1" BSP/SAE	343*	60	345	Ø275	Ø65	Ø60	165	4620	4	72	190	297.6	50
DFC 169-4-5180	1556	245	65	75	1" BSP/SAE	343*	60	345	Ø275	Ø65	Ø60	165	5180	4	81	190	322.5	50
DFC 169-5-5355	1384	245	65	75	1" BSP/SAE	343*	60	345	Ø275	Ø65	Ø60	190	5355	5	80	190	285	50
DFC 169-5-6180	1549	245	65	75	1" BSP/SAE	343*	60	345	Ø275	Ø65	Ø60	165	6180	5	93	190	314	50
DFC 169-5-6830	1709	245	65	75	1" BSP/SAE	343*	60	345	Ø275	Ø65	Ø60	165	6830	5	102	190	340	50
DFC 169-5-7130	1759	245	65	75	1" BSP/SAE	343*	60	345	Ø275	Ø65	Ø60	165	7130	5	107	190	351	50
DFC 191-4-5700	1688	245	65	75	1" BSP/SAE	343*	60	345	Ø275	Ø65	Ø60	175	5700	4	116.2	190	384.6	70
DFC 191-4-6100	1788	245	65	75	1" BSP/SAE	343*	60	345	Ø275	Ø65	Ø60	175	6100	4	124.3	190	401.1	70
DFC 191-5-5780	1504	245	65	75	1" BSP/SAE	343*	60	345	Ø275	Ø65	Ø60	171	5780	5	109	190	372.2	70
DFC 191-5-6180	1498	245	65	75	1" BSP/SAE	343*	60	345	Ø275	Ø65	Ø60	155	6180	5	112.6	190	367.8	70
DFC 191-5-7190	1700	245	65	75	1" BSP/SAE	343*	60	345	Ø275	Ø65	Ø60	175	7190	5	130.8	190	408	70



* Cylinders to be installed by pulling out 20mm

- SAE Port Optional
- All dimensions are in mm
- Subject to change without notice

● Wipro Infrastructure Engineering

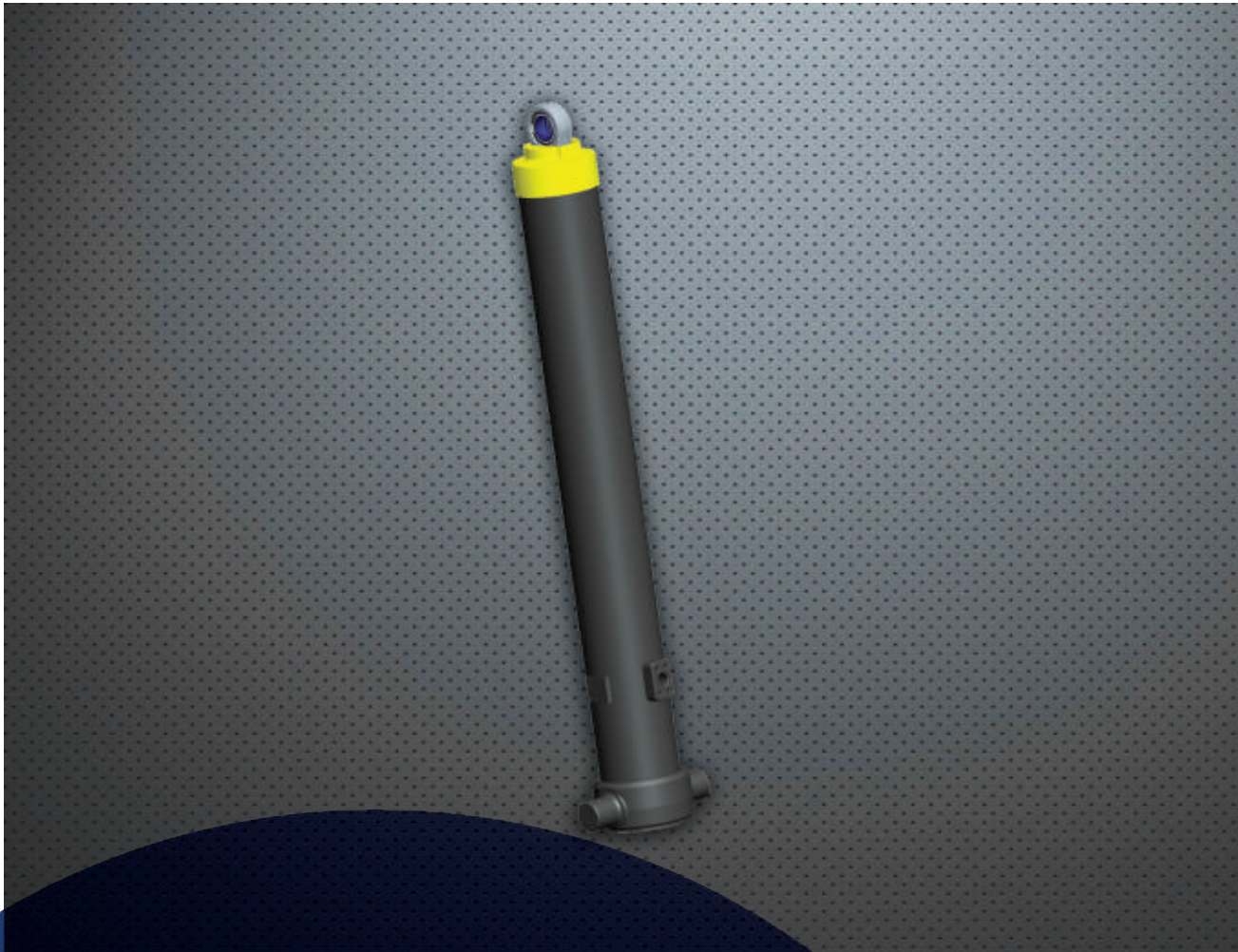
(T) +91 (80) 3929 2111

(F) +91 (80) 3929 4080

(E) winsales.india@wipro.com

(W) wiproinfra.com

Diamond Front End Telescopic Cylinder – Eye Type

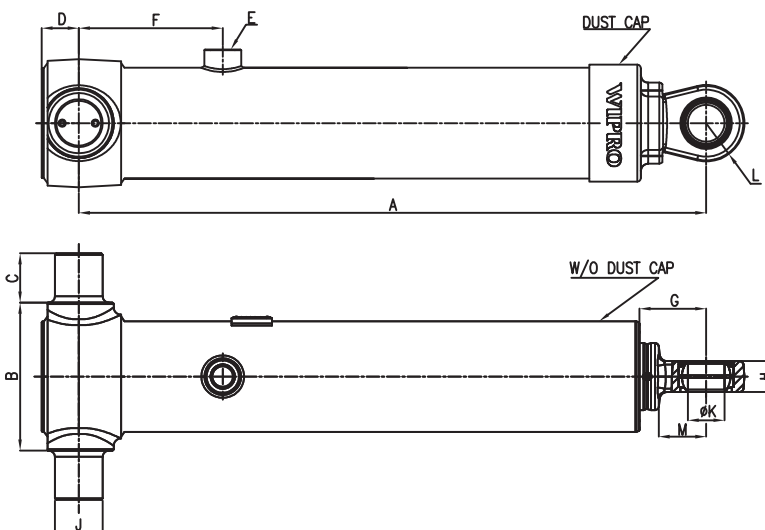


Features

- Piston bearings designed to withstand high compressive and side load
- Bigger size trunnion pins to withstand high bending and shear load
- Special wipers and dust cover to prevent dust entry into the rams
- Secondary sealing systems for leak free rams
- High strength spring steel stoppers to withstand compressive and side load
- Wider piston bearings and rod guides to support rams under dynamic load
- External stopper rings to take relief pressure load at stroke end
- Positive locking for rod eye threads to arrest loosening
- Maintenance free steel on PTFE spherical bearings to take care of misalignments

Diamond Front End Telescopic Cylinder – Eye Type

MODEL	DIMENSIONS											SPECIFICATIONS					
	A	B	C	D	E	F	G	H	J	K	M	Stroke (mm)	Working Volume(Lts)	Pressure (Bar)	Weight (kgs)	Tipping Weight(ton)	
DFE 110-3-2490	1160*	163	65	60	1" BSP/SAE	265	105	42	Ø 65	Ø 50	65	2490	3	16.6	190	94	22
DFE 110-3-2900	1275*	163	65	60	1" BSP/SAE	190	101	42	Ø 65	Ø 50	65	2899	3	19.3	190	96	22
DFE 110-3-3160	1400*	163	65	60	1" BSP/SAE	190	100	42	Ø 65	Ø 50	65	3159	3	21.1	190	104.6	22
DFE 110-3-3700	1509*	163	65	60	1" BSP/SAE	270	91	42	Ø 65	Ø 50	65	3700	3	25	190	116.7	22
DFE 129-3-3570	1500*	201	67	50	1" BSP/SAE	190	91	42	Ø 65	Ø 50	65	3571	3	34.7	190	134.5	35
DFE 129-3-3640	1509*	201	67	50	1" BSP/SAE	265	91	42	Ø 65	Ø 50	65	3640	3	35.3	190	139	35
DFE 129-3-3710	1545*	201	67	50	1" BSP/SAE	195	91	42	Ø 65	Ø 50	65	3706	3	36	190	137.6	35
DFE 129-3-3880	1610*	201	67	50	1" BSP/SAE	195	102	42	Ø 65	Ø 50	65	3880	3	37.3	190	142.5	35
DFE 149-3-3620	1509*	201	67	50	1" BSP/SAE	265	100	42	Ø 65	Ø 50	65	3620	3	48.3	190	174	45
DFE 149-3-3880	1610*	201	67	51	1" BSP/SAE	240	96	42	Ø 65	Ø 50	65	3880	3	51.8	190	169	45
DFE 149-3-4250	1712*	201	67	51	1" BSP/SAE	270	96	42	Ø 65	Ø 50	65	4250	3	56.7	190	185.7	45
DFE 149-4-4525	1465*	201	67	51	1" BSP/SAE	190	97	42	Ø 65	Ø 50	65	4525	4	52.6	190	179.3	45
DFE 149-4-4710	1524*	201	67	51	1" BSP/SAE	190	97	42	Ø 65	Ø 50	65	4710	4	55.5	190	177	45
DFE 149-4-4620	1464*	201	67	51	1" BSP/SAE	190	109	42	Ø 65	Ø 50	65	4620	4	53.7	190	177.2	45
DFE 169-4-4500	1459*	245	65	75	1" BSP/SAE	190	152	42	Ø 65	Ø 50	65	4500	4	70.1	190	216.7	50
DFE 169-4-4620	1472*	245	65	75	1" BSP/SAE	165	115	42	Ø 65	Ø 50	65	4617	4	72	190	216	50
DFE 169-5-5180	1585*	245	65	75	1" BSP/SAE	190	108	42	Ø 65	Ø 50	65	5180	5	81.4	190	239	50
DFE 169-5-5355	1374*	245	65	75	1" BSP/SAE	165	121	42	Ø 65	Ø 50	65	5355	5	73.2	190	226.6	50
DFE 169-5-5775	1500*	245	65	75	1" BSP/SAE	165	143	42	Ø 65	Ø 50	65	5776	5	80	190	235	50
DFE 169-5-6180	1559*	245	65	75	1" BSP/SAE	190	143	42	Ø 65	Ø 50	65	6180	5	93	190	236	50
DFE 169-5-6830	1674*	245	65	75	1" BSP/SAE	190	143	42	Ø 65	Ø 50	65	6830	5	102	190	258	50
DFE 169-5-7130	1769*	245	65	75	1" BSP/SAE	190	143	42	Ø 65	Ø 50	65	7130	5	107	190	266	50
DFE 191-5-6207	1545*	245	65	75	1" BSP/SAE	171	105	42	Ø 65	Ø 50	65	6207	5	113	190	295	60
DFE 191-6-7420	1677*	245	65	75	1" BSP/SAE	171	105	42	Ø 65	Ø 50	65	7420	6	131	190	300	60
DFE 214-5-6180	1517*	270	65	85	1" BSP/SAE	190	97	42	Ø 65	Ø 60	75	6180	5	145	190	361.8	80
DFE 214-5-7130	1727*	270	65	85	1" BSP/SAE	190	97	52	Ø 65	Ø 60	75	7130	5	168	190	401	80
DFE 238-5-7130	1720*	320	70	85	1" BSP/SAE	205	100	52	Ø 70	Ø 60	75	7120	5	213	190	482	100



- * Cylinders to be installed by pulling out 20mm
- SAE Port Optional
 - All dimensions are in mm
 - Subject to change without notice

● Wipro Infrastructure Engineering

(T) +91 (80) 3929 2111
 (F) +91 (80) 3929 4080
 (E) winsales.india@wipro.com
 (W) wiproinfra.com