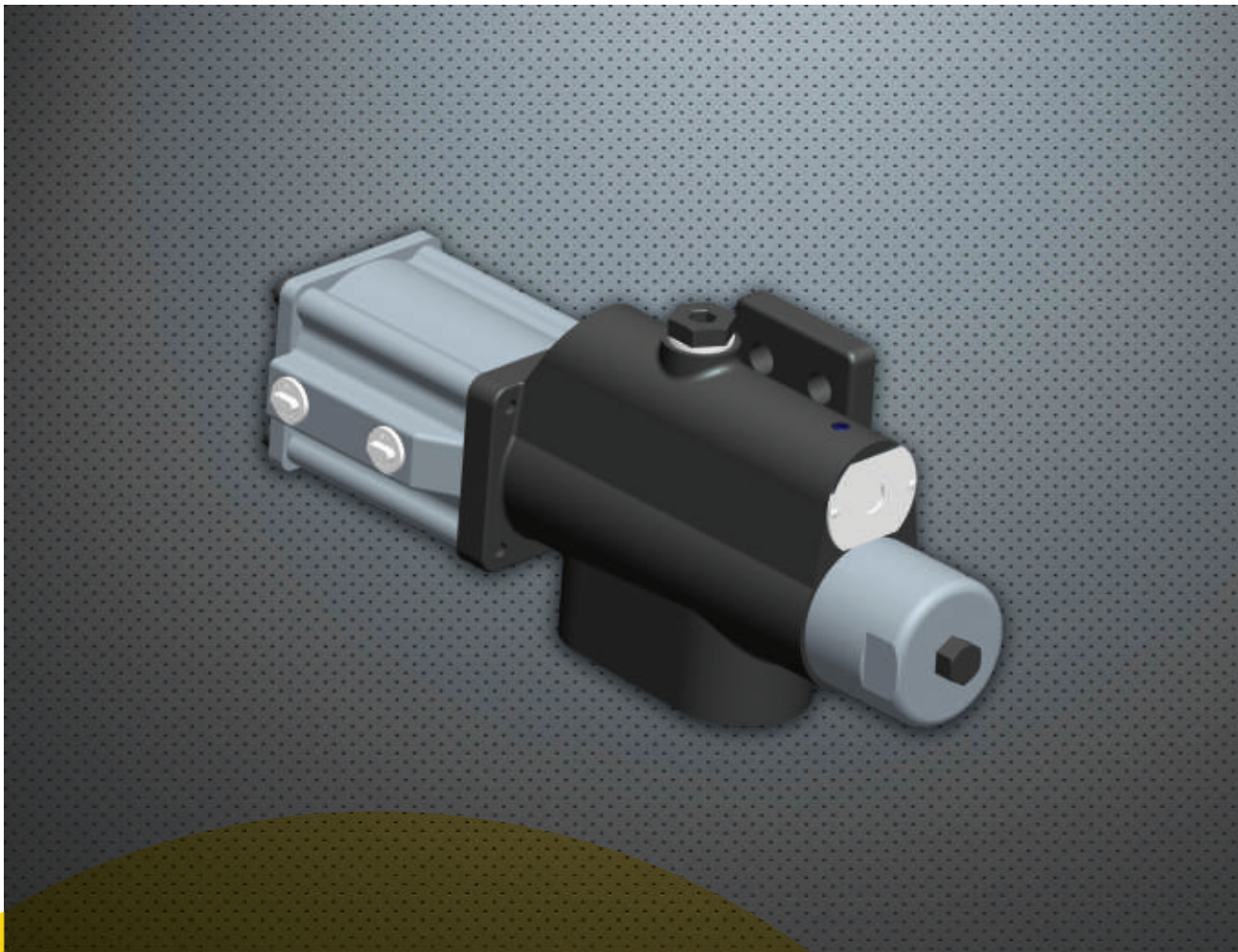


Direction Control Valve



Features

- Well-designed flow path to minimise pressure drop across ports
- Stiffer centring spring to avoid stickiness of spool
- Compact and tamper proof relief system
- High strength nodular iron valve block
- Hydrostatic balanced, multi land support hardened spool
- Load holding with better spool overlap

Direction Control Valves

Type	UBT VALVES			FET VALVES				DUMPER PLACER/ CAR CARRIER	
	Double Acting	Double Acting	Double Acting	Single Acting	Single Acting	Single Acting	Single Acting	Double Acting	Double Acting
Wipro Part Numbers	V115	V116	V138	V136	V140	V154	V141/149	V144	V146/147
Flow Handling Capacity (lpm)	120	120	100	100	100	150	200	80	45
Relief Pressure Setting (bar)	210	230	230	190	190	190	200/220	175	210
Actuation	Manual	Manual	Pneumatic	Pneumatic	Pneumatic	Pneumatic	Pneumatic	Pneumatic/ Manual	Pneumatic/ Manual
Mounting	Remote	Remote	Remote	On filter	On filter	On Cylinder	On tank/filter	Remote	Remote
Dry Weight	3.5 Kg	3.5 Kg	6.0 Kg	5.3 Kg	5.3 Kg	6 Kg	7 Kg	12 kg	12/8 kg
Number of Positions	3	3	3	3	3	3	3	3	3
Number of Ports	4	4	4	3	3	3	3	4	4
P	M22x1.5	M22x1.5	M22x1.5	3/4" BSP	3/4" BSP	3/4" BSP	1" BSP	3/4" BSP	3/4" BSP
T	M27x2	M27x2	M27x2	Flange	Flange	Flange	Flange	3/4" BSP	3/4" BSP
A	M27x2	M27x2	M27x2	3/4" BSP	3/4" BSP	SAE Flange	1" BSP	1/2" BSP	1/2" BSP
B	M27x2	M27x2	M27x2	NA	NA	NA	NA	1/2" BSP	1/2" BSP
Spool Neutral Position	P,T & B open A closed	P,T & B open A closed	P,T & B open A closed	P & T open A closed	P & T open A closed	P & T open A closed	P & T open A closed	P,T & B open A closed	P,T & B open A closed
Number of Banks	Monoblock	Monoblock	Monoblock	Monoblock	Monoblock	Monoblock	Monoblock	3 Bank	3 & 2 Bank
Temp Range of Oil (° C)	-20 to + 80	-20 to + 80	-20 to + 80	-20 to + 80	-20 to + 80	-20 to + 80	-20 to + 80	-20 to + 80	-20 to + 80

● Wipro Infrastructure Engineering

(T) +91 (80) 3929 2111
(F) +91 (80) 3929 4080
(E) winsales.india@wipro.com
(W) wiproinfra.com